

E-stop protective shroud

84-902B

Distribution by Newark



<https://newark.eao.com/component/84-902B/en/e...>

Your product:



84-902B E-stop protective shroud

Loading ...

FRONT

Colour: Yellow

ELECTRICAL CHARACTERISTICS

Forward voltage:

MECHANICAL CHARACTERISTICS

Weight: 0.007 kg

AMBIENT CONDITION

IP front protection: IP65

OTHER

Short Description: E-stop protective shroud, Ø 50 mm, Plastic, EMERGENCY STOP, Yellow

Titel Accessory: E-stop protective shroud

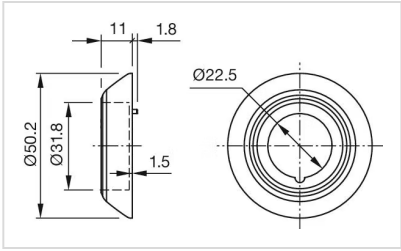
Dimension: Ø 50 mm

Material: Plastic

Marking: EMERGENCY STOP

Hints: Front panel thickness 1 ... 3 mm
With anti-twist device
When using a protective shroud the e-stop or stop-switch has to be turned by 180° to be mounted. See dimensional drawing
The protection shroud Part No. 84-909 is not suitable for a proper use of emergency-stop. It can obstruct a spontaneous operation of the emergency-stop switch
This shroud Part No. 84-906 is not compliant to EN ISO 13850. There are no restrictions when combined with stop switches.

Dimension drawings:



for Part No. 84-902, 84-902A
84-902B, 84-904C