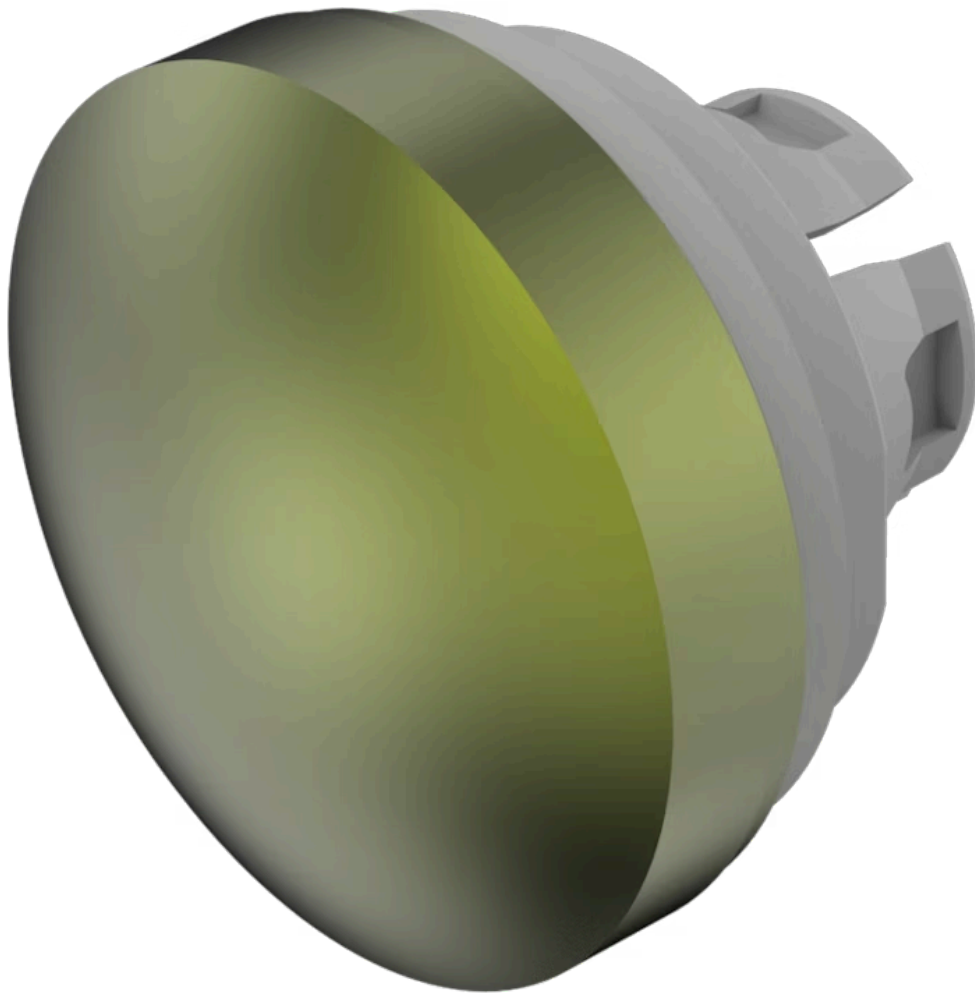


Lens

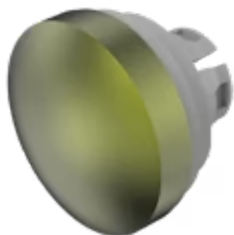
84-
7202.500

Distribution by
Newark



<https://newark.eao.com/component/84-7202.500/...>

Your product:



84-7202.500 Lens

Loading ...

FRONT

Front form: Round

OPERATING-/INDICATION PART

Lens colour: Olive green

Lens material: Aluminium

Lens illumination: Non illuminated

Lens shape: Convex

Lens optics: opaque

Lens type: Level with front bezel

Symbol: No Symbol

MECHANICAL CHARACTERISTICS

Weight: 0.003 kg

CERTIFICATE

REACH: REACH compliant

RoHS: RoHS compliant

OTHER

Short Description: Lens, Ø 19.7 mm, Non illuminated, No Symbol, Olive green, Convex, Aluminium

Dimension: Ø 19.7 mm

Hints: The colour of anodised aluminium parts can vary due to technical production reasons