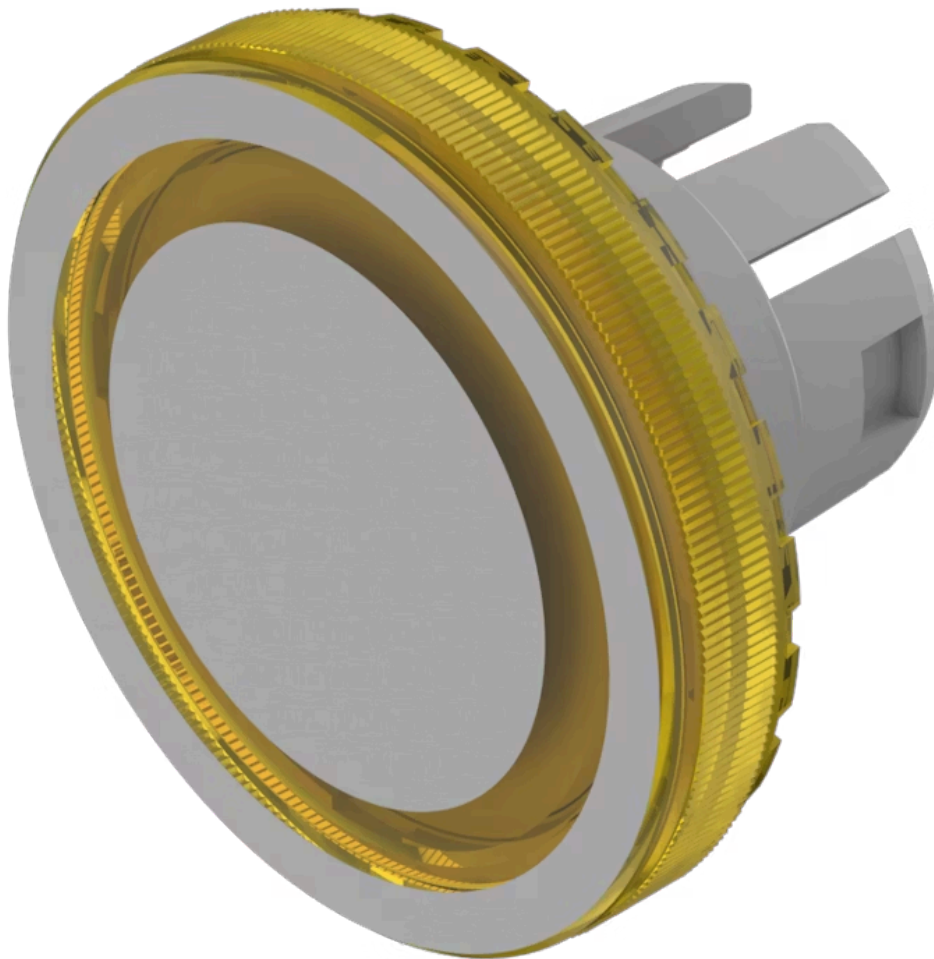


Lens

84-
7111.401

Distribution by
Newark



<https://newark.eao.com/component/84-7111.401/...>

Your product:



84-7111.401 Lens

Loading ...

FRONT

Front form: Round

OPERATING-/INDICATION PART

Lens colour: Yellow

Lens material: Plastic

Lens illumination: Illuminated

Lens shape: Flush

Lens optics: transparent

Lens type: Level with front bezel

Symbol: Ring

Shape of illumination: Ring

MECHANICAL CHARACTERISTICS

Weight: 0.001 kg

CERTIFICATE

REACH: REACH compliant

RoHS: RoHS compliant

OTHER

Short Description: Lens, Ø 19.7 mm, Illuminated, Ring, Yellow, Flush, Plastic

Dimension: Ø 19.7 mm

Hints:

The silvery coat is being applied on the lens (screen print) with an additional protective lacquer. Further information see Technical data

Description component:

Material lens: Plastic as per UL94 V2