

Illuminated push button, connector M12,  $\varnothing 22$  mm, stainless steel 316L

Distribution by Newark



82-6657.2154



<https://newark.eao.com/component/82-6657.2154...>

Your product:

---



82-6657.2154

Illuminated push button, connector M12,  
Ø 22 mm, stainless steel 316L

*Loading ...*

#### FRONT

Front dimension:	Ø 25 mm
Front form:	Round
Front bezel material:	Stainless steel 316L
Front bezel shape:	Flush

#### MOUNTING

Mounting cut-out:	Ø 22 mm
Mounting type:	Panel mounting

#### OPERATING-/INDICATION PART

Lens colour:	Silver
Lens material:	Stainless steel 316L
Lens illumination:	Illuminated
Lens shape:	Flush
Lens optics:	opaque
Illumination colour:	White
Shape of illumination:	Ring (Tritan)

#### ELECTRICAL CHARACTERISTICS

Switching voltage and switching current:	according to UL 508 (Silver contacts)	
	cosφ 0,75 ... 0,8	
	Voltage	Current
	120 VAC	5 A
240 VAC	3 A	
24 VAC	1 A	

according to IEC 60947-5-1 (Silver contacts)

Service categorie AC-15

Voltage

24 VAC

35 VAC

110 VAC

220 VAC

Switch rating DC service categorie DC-13 (Silver contacts)

Voltage

24 VDC

35 VDC

110 VDC

220 VDC

Current

1 A

1 A (M12 version)

1 A

0.5 A

Current

0.7 A

0.5 A (M12 version)

0.2 A

0.1 A

<b>Operating voltage:</b>	24 V DC (LED)
<b>Rated Operational Voltage Ue:</b>	250 VAC
<b>Rated insulation voltage Ui:</b>	250 V
<b>Short circuit protective device:</b>	fuse / 500 V / 5 A / gG
<b>Rated short-circuit current caused:</b>	AC: 1 kA DC: 1 kA
<b>Switching rating:</b>	35 V AC/DC @ 0,6 A
<b>Electrical lifetime:</b>	50 000 cycles of operation
<b>Electric strength:</b>	1500 VAC, 50 Hz 1 minute between life terminals and ground
<b>Pollution degree:</b>	2, according to EN IEC 60947-1
<b>Thermal current Ith:</b>	5 A

## MECHANICAL CHARACTERISTICS

<b>Terminal:</b>	Connector M12 (5 pins)
<b>Switching action:</b>	Maintained
<b>Switching system:</b>	Snap-action switching element
<b>Mechanical lifetime:</b>	500 000 cycles of operation
<b>Operating force:</b>	4 N ... 7 N
<b>Operating Travel:</b>	ca. 3 mm
<b>Tightening torque:</b>	0.5 ... 0.6 Nm
<b>Weight:</b>	0.043 kg

## AMBIENT CONDITION

<b>IP front protection:</b>	IP65, IP67
<b>Operating temperature:</b>	- 30 °C ... + 70 °C
<b>Storage temperature:</b>	- 40 °C ... + 80 °C

**Shock resistance:** Max. 500 m / s<sup>2</sup> as per IEC 60068-2-27

**Vibration resistance:** 10 ... 500 Hz, amplitude 1.5 mm p-p according to IEC 60068-2-6

**Climate resistance:** Damp heat, 21 days according to IEC 60512-11

**CERTIFICATE**

**Conformities:** CE, 2011 / 65 / EC (RoHS), 2014 / 35 / EU (LVD)

**REACH:** REACH compliant

**RoHS:** RoHS compliant

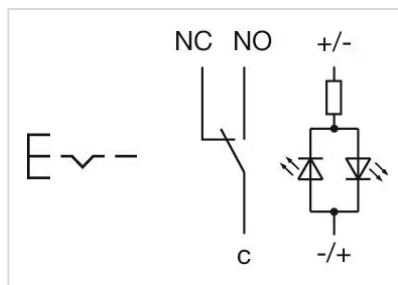
**OTHER**

**Short Description:** Illuminated push button, connector M12, Ø 22 mm, stainless steel 316L, Maintained, 35 V AC/DC @ 0,6 A, 24 V DC (LED), Connector M12 (5 pins), Round, Stainless steel 316L, White, Silver

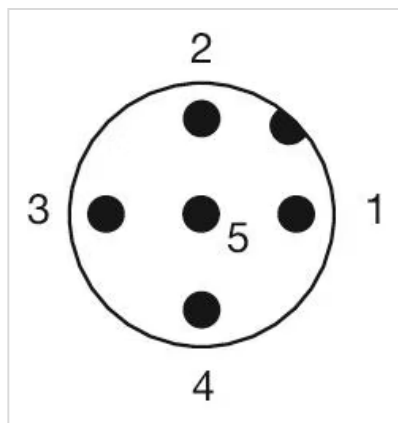
**Kind of illumination:** Single-LED

**Housing size:** 19 mm

**Wiring diagrams:**

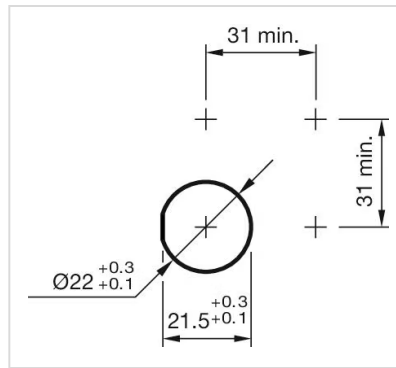


**Component layouts:**



1 = NC  
 2 = LED+  
 3 = Common  
 4 = LED-  
 5 = NO  
 A-Coded

**Mounting cut-outs:**



**Dimension drawings:**

