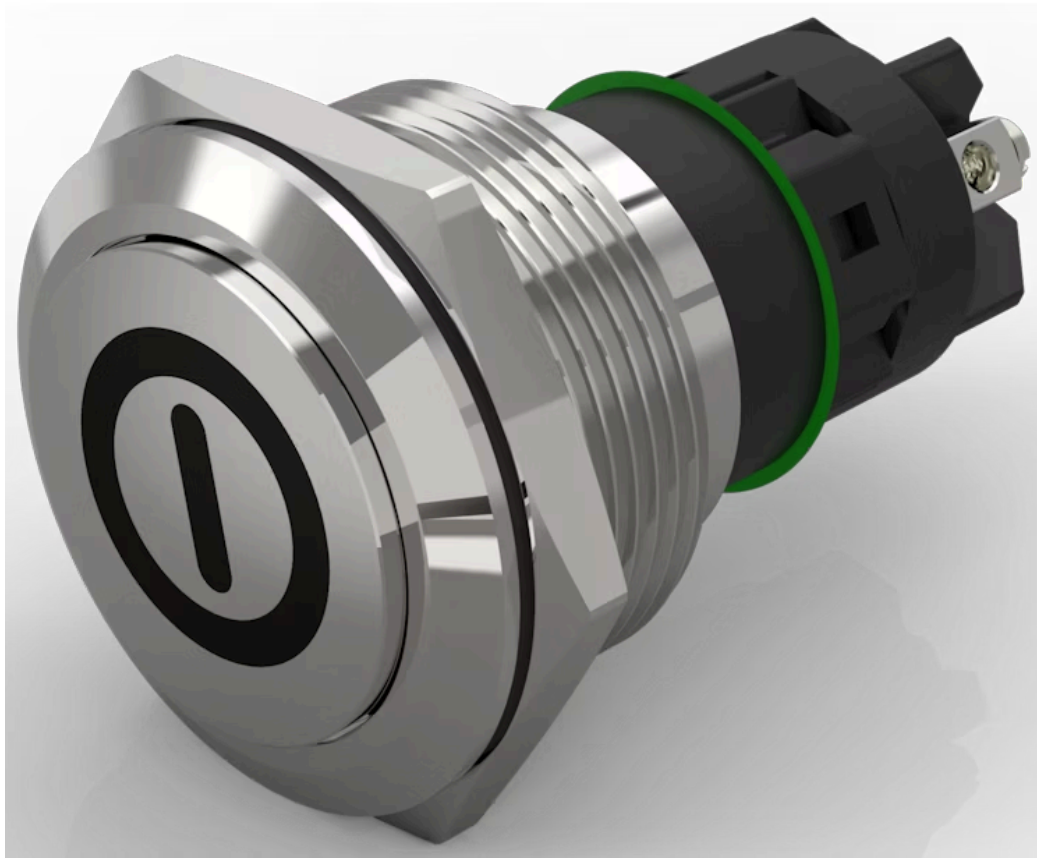


Push button Ø  
22 mm silver contact

82-6162.1000.B001

Distribution by  
Newark



<https://newark.eao.com/component/82-6162.1000...>

Your product:

---



## 82-6162.1000.B001 Push button Ø 22 mm silver contact

*Loading ...*

### FRONT

|                              |                 |
|------------------------------|-----------------|
| <b>Front dimension:</b>      | Ø 25 mm         |
| <b>Front form:</b>           | Round           |
| <b>Front bezel material:</b> | Stainless steel |
| <b>Front bezel shape:</b>    | Flush           |

### MOUNTING

|                          |                |
|--------------------------|----------------|
| <b>Mounting cut-out:</b> | Ø 22 mm        |
| <b>Mounting type:</b>    | Panel mounting |

### OPERATING-/INDICATION PART

|                           |                 |
|---------------------------|-----------------|
| <b>Lens colour:</b>       | Silver          |
| <b>Lens material:</b>     | Stainless steel |
| <b>Lens illumination:</b> | Non illuminated |
| <b>Lens shape:</b>        | Flush           |
| <b>Lens optics:</b>       | opaque          |
| <b>Symbol:</b>            | ON/OFF          |

### ELECTRICAL CHARACTERISTICS

**Switching voltage and switching current:**

according to IEC 60947-5-1 (Silver contacts)

Service categorie AC-15

Voltage

24 VAC

35 VAC

110 VAC

220 VAC

Current

1 A

1 A (M12 version)

1 A

0.5 A

Switch rating DC service categorie DC-13 (Silver contacts)

Voltage

24 VDC

35 VDC

110 VDC

220 VDC

Current

0.7 A

0.5 A (M12 version)

0.2 A

0.1 A

according to UL 508 (Silver contacts)

$\cos\phi$  0,75 ... 0,8

Voltage

120 VAC

240 VAC

24 VAC

Current

5 A

3 A

1 A

**Contacts:**

1 C

**Rated Operational Voltage  $U_e$ :**

250 VAC

**Rated insulation voltage  $U_i$ :**

250 V

**Short circuit protective device:**

fuse / 500 V / 5 A / gG

**Rated short-circuit current caused:**

AC: 1 kA

DC: 1 kA

**Switching rating:**

240 V

**Electrical lifetime:**

50 000 cycles of operation

**Electric strength:**

1500 VAC, 50 Hz 1 minute between life terminals and ground

**Pollution degree:**

2, according to EN IEC 60947-1

**Thermal current  $I_{th}$ :**

5 A

## **MECHANICAL CHARACTERISTICS**

|                             |                                       |
|-----------------------------|---------------------------------------|
| <b>Terminal:</b>            | Screw terminal                        |
| <b>Contact material:</b>    | Silver                                |
| <b>Switching action:</b>    | Momentary                             |
| <b>Switching system:</b>    | Snap-action switching element         |
| <b>Mechanical lifetime:</b> | 1 Mil. cycles of operation            |
| <b>Operating force:</b>     | 4 N ... 7 N                           |
| <b>Operating Travel:</b>    | ca. 3 mm                              |
| <b>Tightening torque:</b>   | 0.5 ... 0.6 Nm, Screw terminal 0.1 Nm |
| <b>Weight:</b>              | 0.02 kg                               |

### AMBIENT CONDITION

|                               |  |
|-------------------------------|--|
| <b>IP front protection:</b>   | IP65, IP67   |
| <b>Operating temperature:</b> | - 30 °C ... + 70 °C  |
| <b>Storage temperature:</b>   | - 40 °C ... + 80 °C  |
| <b>Shock resistance:</b>      | Max. 500 m / s <sup>2</sup> as per IEC 60068-2-27              |
| <b>Vibration resistance:</b>  | 10 ... 500 Hz, amplitude 1.5 mm p-p according to IEC 60068-2-6 |
| <b>Climate resistance:</b>    | Damp heat, 21 days according to IEC 60512-11                   |

### CERTIFICATE

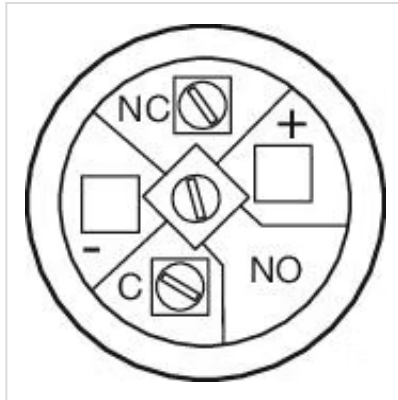
|                      |   |
|----------------------|---|
| <b>Approbations:</b> | CB, CCC, C UL, UL                               |
| <b>Conformities:</b> | CE, 2011 / 65 / EC (RoHS), 2014 / 35 / EU (LVD) |
| <b>REACH:</b>        | REACH compliant                                 |
| <b>RoHS:</b>         | RoHS compliant                                  |

### OTHER

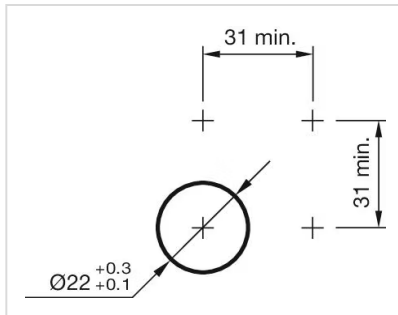
|                           |   |
|---------------------------|---|
| <b>Short Description:</b> | Push button Ø 22 mm silver contact, Momentary, 240 V, 1 C, Screw terminal, Round, Stainless steel, ON/OFF, Silver |
| <b>Housing size:</b>      | 19 mm   |
| <b>Wiring diagrams:</b>   |   |



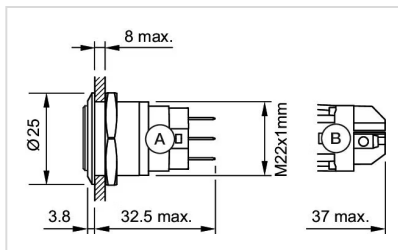
**Component layouts:**



**Mounting cut-outs:**



**Dimension drawings:**



A = Solder terminal  
B = Screw terminal