

Push button Ø  
19 mm silver contact

Distribution by  
Newark



82-5162.2000.B001



<https://newark.eao.com/component/82-5162.2000...>

Your product:

---



## 82-5162.2000.B001 Push button Ø 19 mm silver contact

*Loading ...*

### FRONT

<b>Front dimension:</b>	Ø 22 mm
<b>Front form:</b>	Round
<b>Front bezel material:</b>	Stainless steel
<b>Front bezel shape:</b>	Flush

### MOUNTING

<b>Mounting cut-out:</b>	Ø 19 mm
<b>Mounting type:</b>	Panel mounting

### OPERATING-/INDICATION PART

<b>Lens colour:</b>	Silver
<b>Lens material:</b>	Stainless steel
<b>Lens illumination:</b>	Non illuminated
<b>Lens shape:</b>	Raised
<b>Lens optics:</b>	opaque
<b>Symbol:</b>	ON/OFF

### ELECTRICAL CHARACTERISTICS

**Switching voltage and switching current:**

according to IEC 60947-5-1 (Silver contacts)

Service categorie AC-15

Voltage

24 VAC

35 VAC

110 VAC

220 VAC

Current

1 A

1 A (M12 version)

1 A

0.5 A

Switch rating DC service categorie DC-13 (Silver contacts)

Voltage

24 VDC

35 VDC

110 VDC

220 VDC

Current

0.7 A

0.5 A (M12 version)

0.2 A

0.1 A

according to UL 508 (Silver contacts)

$\cos\phi$  0,75 ... 0,8

Voltage

120 VAC

240 VAC

24 VAC

Current

5 A

3 A

1 A

<b>Contacts:</b>	1 C
<b>Rated Operational Voltage <math>U_e</math>:</b>	250 VAC
<b>Rated insulation voltage <math>U_i</math>:</b>	250 V
<b>Short circuit protective device:</b>	fuse / 500 V / 5 A / gG
<b>Rated short-circuit current caused:</b>	AC: 1 kA DC: 1 kA
<b>Switching rating:</b>	240 V
<b>Electrical lifetime:</b>	50 000 cycles of operation
<b>Electric strength:</b>	1500 VAC, 50 Hz 1 minute between life terminals and ground
<b>Pollution degree:</b>	2, according to EN IEC 60947-1
<b>Thermal current <math>I_{th}</math>:</b>	5 A

## MECHANICAL CHARACTERISTICS

<b>Terminal:</b>	Screw terminal
<b>Contact material:</b>	Silver
<b>Switching action:</b>	Maintained
<b>Switching system:</b>	Snap-action switching element
<b>Mechanical lifetime:</b>	500 000 cycles of operation
<b>Operating force:</b>	4 N ... 7 N
<b>Operating Travel:</b>	ca. 3 mm
<b>Tightening torque:</b>	0.5 ... 0.6 Nm, Screw terminal 0.1 Nm
<b>Weight:</b>	0.02 kg

### **AMBIENT CONDITION**

<b>IP front protection:</b>	IP65, IP67
<b>Operating temperature:</b>	- 30 °C ... + 70 °C
<b>Storage temperature:</b>	- 40 °C ... + 80 °C
<b>Shock resistance:</b>	Max. 500 m / s <sup>2</sup> as per IEC 60068-2-27
<b>Vibration resistance:</b>	10 ... 500 Hz, amplitude 1.5 mm p-p according to IEC 60068-2-6
<b>Climate resistance:</b>	Damp heat, 21 days according to IEC 60512-11

### **CERTIFICATE**

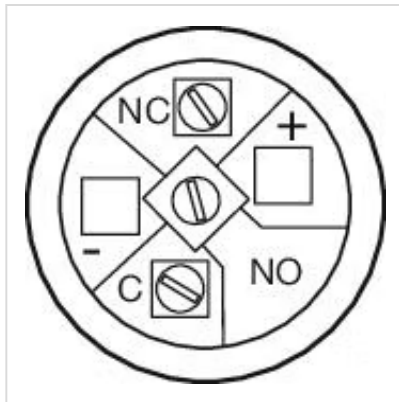
<b>Approbations:</b>	CB, CCC, C UL, UL
<b>Conformities:</b>	CE, 2011 / 65 / EC (RoHS), 2014 / 35 / EU (LVD)
<b>REACH:</b>	REACH compliant
<b>RoHS:</b>	RoHS compliant

### **OTHER**

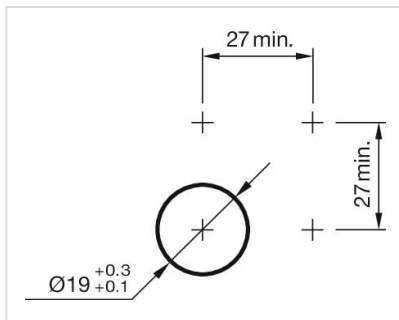
<b>Short Description:</b>	Push button Ø 19 mm silver contact, Maintained, 240 V, 1 C, Screw terminal, Round, Stainless steel, ON/OFF, Silver
<b>Housing size:</b>	19 mm
<b>Wiring diagrams:</b>	



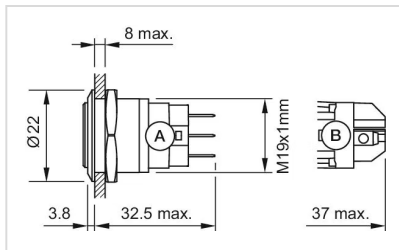
**Component layouts:**



**Mounting cut-outs:**



**Dimension drawings:**



A = Solder terminal  
 B = Screw terminal