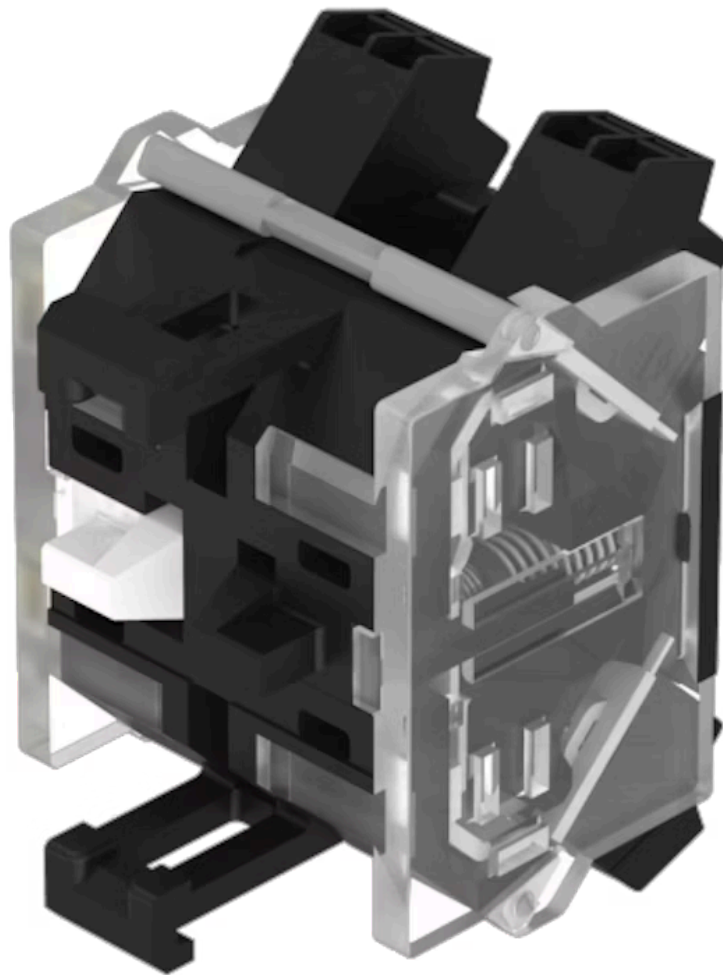


# Switching element - discontinued item

704.918.3

Distribution by  
Newark



<https://newark.eao.com/component/704.918.3/en...>

Your product:



## 704.918.3 Switching element - discontinued item

*Loading ...*

### PRODUCT RANGE

**Product Status:**

Phase-out

**successor product:**

<https://www.eao.com/c/704.918.3-1>

### ELECTRICAL CHARACTERISTICS

**Switching voltage and switching current:**

as per DIN EN IEC 60947-5-1		
voltage	DC13	AC15
24 V	4.0 A	8.0 A
60 V	1.5 A	8.0 A
110 V	1.0 A	
120 V		8.0 A
230 V	0.4 A	7.0 A
400 V	0.2 A	5.0 A
500 V	0.15 A	4.0 A
as per UL 60947-5-1		
voltage	power	
24 VDC	4.0 A, Pilot duty	
60 VDC	1.5 A, Pilot duty	
120 VDC	1.0 A, Pilot duty	
240 VDC	0.4 A, Pilot duty	
415 VDC	0.2 A, Pilot duty	
480 VDC	0.14A, Pilot duty	
120 VAC	8.0 A, Pilot duty	
240 VAC	7.0 A, Pilot duty	
415 VAC	5.0 A, Pilot duty	
480 VAC	4.0 A, Pilot duty	

**Contacts:**

2 NO

**Rated impulse withstand voltage U<sub>imp</sub>:**

4 kV, according to EN/IEC 60947-5-1

**Rated insulation voltage U<sub>i</sub>:**

500 V

**Recommended minimum operational data:**

Gold-silver contacts	
Voltage	24 VDC
Current	5 mA
Hard silver contacts	
Voltage	24 VDC
Current	50 mA

**Switching rating:**

250 V AC @ 6 A

**Electrical lifetime:**

50 000 cycles of operation

<b>Pollution degree:</b>	3
<b>Standards:</b>	The switches comply with the "Standards for low-voltage switching devices" EN IEC 60947-5-1
<b>Thermal current I<sub>th</sub>:</b>	6 A 10 A Max. zulässiger Strom bei Dauerbetrieb und Umgebungstemperaturen, welche die angegebenen max. Werte nicht überschreiten. 10 A Max. permissible current for continuous operation and ambient temperatures not exceeding the specified max. values.

## MECHANICAL CHARACTERISTICS

<b>Terminal:</b>	Push-in terminal
<b>Contact material:</b>	Silver
<b>Switching system:</b>	Slow-make switching element
<b>Switching system:</b>	The double-break, slow-make switching element is equipped with one or two independent contact systems, acting as normally open or normally closed contact. The normally closed contact has forced opening. Slow-make contacts with forced action are ideal for high switch ratings.
<b>Operating force:</b>	1 Normally closed approx. 2 N, 1 Normally open approx. 3 N
<b>Wire cross section:</b>	Max. wire cross-section 2 wires with 1 mm Skinning wire 8 mm Max. wire cross-section of stranded cable 2 x 0.75 mm <sup>2</sup> use stranded wires only with wire end ferrules of 8 mm length Only one polarity is allowed on each side when wiring.
<b>Weight:</b>	0.026 kg

## AMBIENT CONDITION

<b>IP Protection:</b>	IP20
<b>Operating temperature:</b>	- 40 °C ... + 55 °C
<b>Storage temperature:</b>	- 40 °C ... + 85 °C
<b>Shock resistance:</b>	300 m/s <sup>2</sup> , pulse width 18 ms, (single impacts, semi-sinusoidal as per EN IEC 60068-2-27)
<b>Climate resistance:</b>	Relative humidity, max. 95%, non-condensing

## CERTIFICATE

<b>Approbations:</b>	CB (IEC 60947-5-1), cULus, DNV, EAC, NFF, VDE
<b>Conformities:</b>	CE, CCC, UKCA
<b>REACH:</b>	REACH compliant
<b>RoHS:</b>	RoHS compliant

OTHER

**Short Description:**

Switching element - discontinued item, Slow-make switching element, 250 V AC @ 6 A, Silver, 2 NO, Push-in terminal

**Hints:**

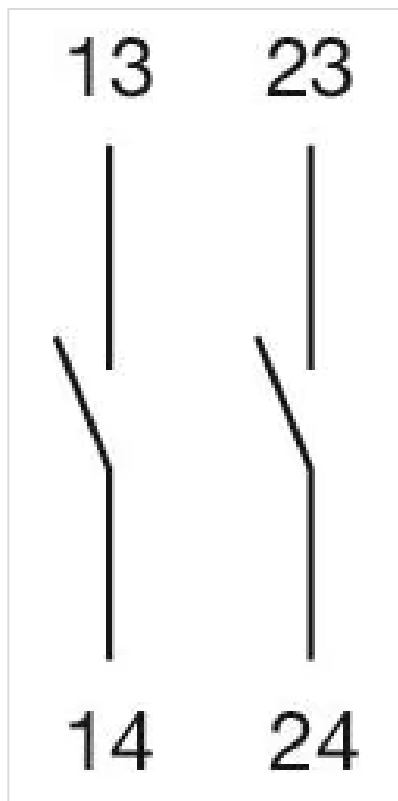
When using the switching element, the application guidelines must be observed. For the third switching element the terminal marking insert is to be ordered separately  
Operating temperature: Other temperatures on request

**Special requirements:**

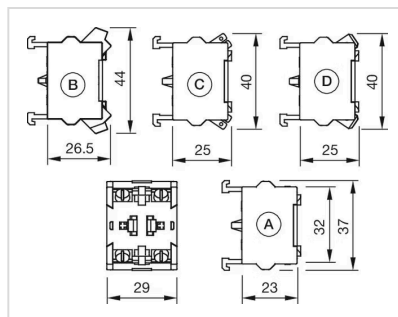
Special requirements for positive-opening auxiliary current switches  
Positive opening travel  
Minimum force  
Max. travel

Emerg  
Emerg  
which i  
Emerg

**Wiring diagrams:**



**Dimension drawings:**



- A = Screw terminal
- B = Push-in terminal (PIT)
- C = Plug-in terminal 6.3 mm x 0.8 mm
- D = Double plug-in terminal 6.3 mm x 0.8 mm