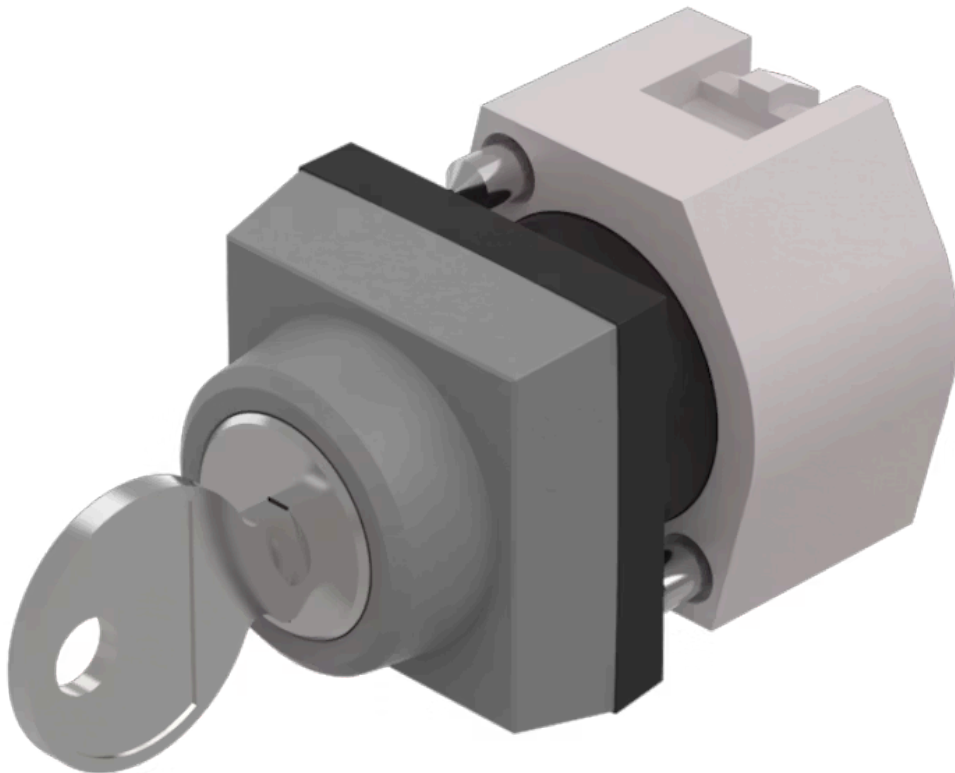


Actuator

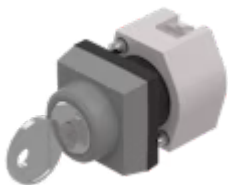
704.342.0

Distribution by
Newark



<https://newark.eao.com/component/704.342.0/en...>

Your product:



704.342.0 Actuator

Loading ...

FRONT

| | |
|------------------------------|---------------|
| Front dimension: | 30 mm x 30 mm |
| Front form: | Square |
| Front bezel colour: | Grey |
| Front bezel material: | Plastic |

MOUNTING

| | |
|-----------------------|----------------|
| Design: | Raised |
| Mounting type: | Panel mounting |

ELECTRICAL CHARACTERISTICS

| | |
|-------------------|---|
| Standards: | The switches comply with the "Standards for low-voltage switching devices" DIN EN 60947-1 |
|-------------------|---|

MECHANICAL CHARACTERISTICS

| | |
|-----------------------------|-----------------------------|
| Switching action: | Rest (a) - Maintained (a) |
| Switching positions: | 2 positions |
| Switching angle: | 90° right / -45° ... +45° |
| Mechanical lifetime: | ≤50 000 cycles of operation |
| Weight: | 0.064 kg |

AMBIENT CONDITION

| | |
|-------------------------------|---------------------|
| IP Protection: | IP65 front side |
| Operating temperature: | - 40 °C ... + 55 °C |

Storage temperature: - 40 °C ... + 85 °C

CERTIFICATE

REACH: REACH compliant

RoHS: RoHS compliant

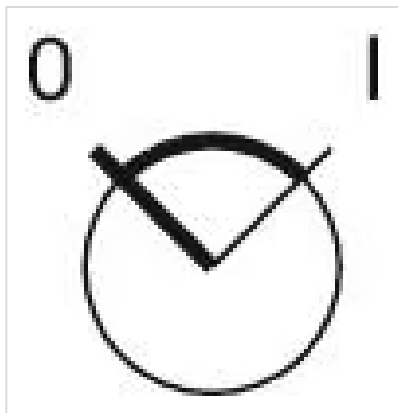
OTHER

Short Description: Actuator, 30 mm x 30 mm, Square, Grey, Plastic, Rest (a) - Maintained (a)

Hints: The standard lock Ronis 251
Further lock numbers on request
Max. 3 switching elements can be clipped on

max. number of switching elements: 3

Switching positions:



Wiring diagrams:



Mounting cut-outs:



- A = Screw terminal
- B = Push-in terminal (PIT)
- C = Plug-in terminal 6.3 mm x 0.8 mm
- D = Double plug-in terminal 6.3 mm x 0.8 mm

Dimension drawings:



A = Screw terminal