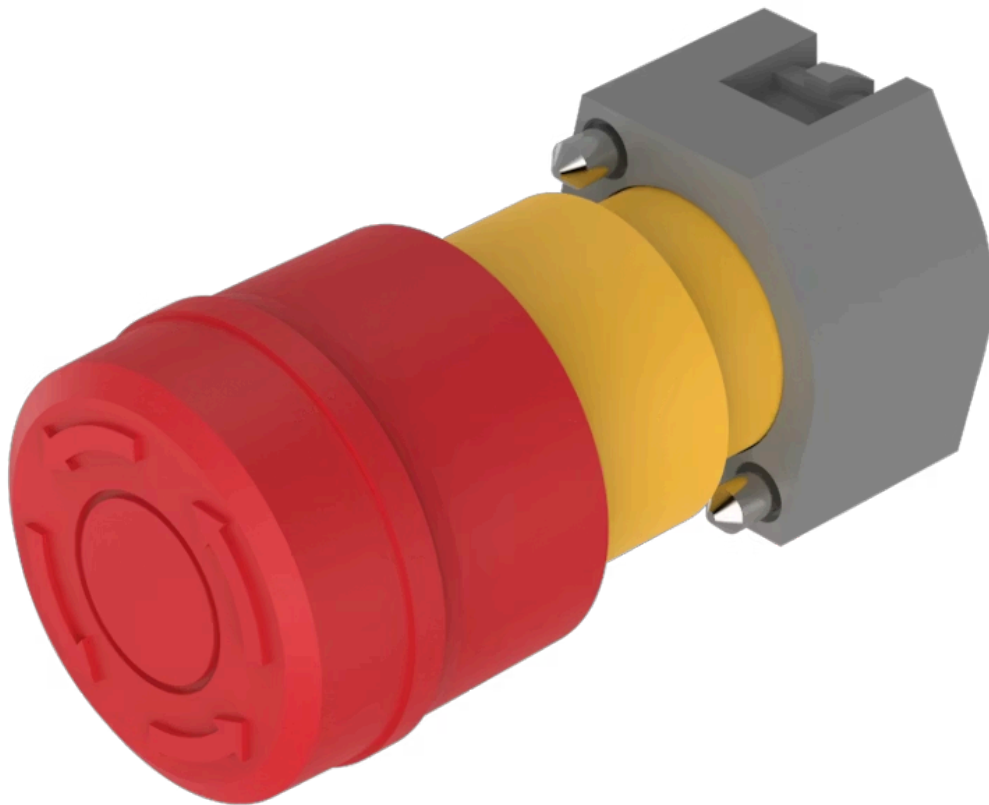


# Actuator

704.064.2A

Distribution by  
Newark



<https://newark.eao.com/component/704.064.2A/e...>

Your product:

---



## 704.064.2A Actuator

*Loading ...*

### FRONT

**Front dimension:** Ø 37 mm

**Front form:** Round

### MOUNTING

**Design:** Raised

**Mounting type:** Panel mounting

### OPERATING-/INDICATION PART

**Lens colour:** Red

**Lens material:** Plastic

**Lens illumination:** Non illuminated

**Lens shape:** Mushroom-head

**Lens optics:** opaque

### MECHANICAL CHARACTERISTICS

**Switching action:** Maintained

**Release type:** Twist to unlock

**Mechanical lifetime:** ≥50 000 cycles of operation

**Operating force:** 8 N

**Operating Travel:** ca. 5.8 mm ± 0.2 mm

**Weight:** 0.048 kg

## AMBIENT CONDITION

<b>IP Protection:</b>	IP65 front side
<b>Operating temperature:</b>	- 25 °C ... + 55 °C
<b>Storage temperature:</b>	- 40 °C ... + 85 °C

## CERTIFICATE

<b>REACH:</b>	REACH compliant
<b>RoHS:</b>	RoHS compliant

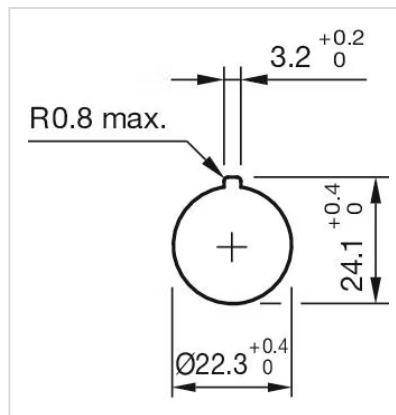
## OTHER

<b>Short Description:</b>	Actuator, Ø 37 mm, Mushroom-head, Non illuminated, Red, Plastic, opaque, Round, Maintained, Twist to unlock
<b>Housing colour:</b>	Yellow
<b>Housing material:</b>	Plastic
<b>Marking:</b>	Arrows
<b>Product attributes:</b>	Twist to unlock anti-clockwise
<b>Hints:</b>	Shaft yellow

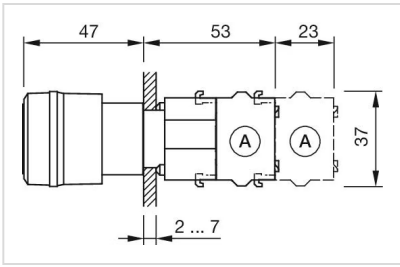
## Wiring diagrams:



## Mounting cut-outs:



## Dimension drawings:



A = Screw terminal