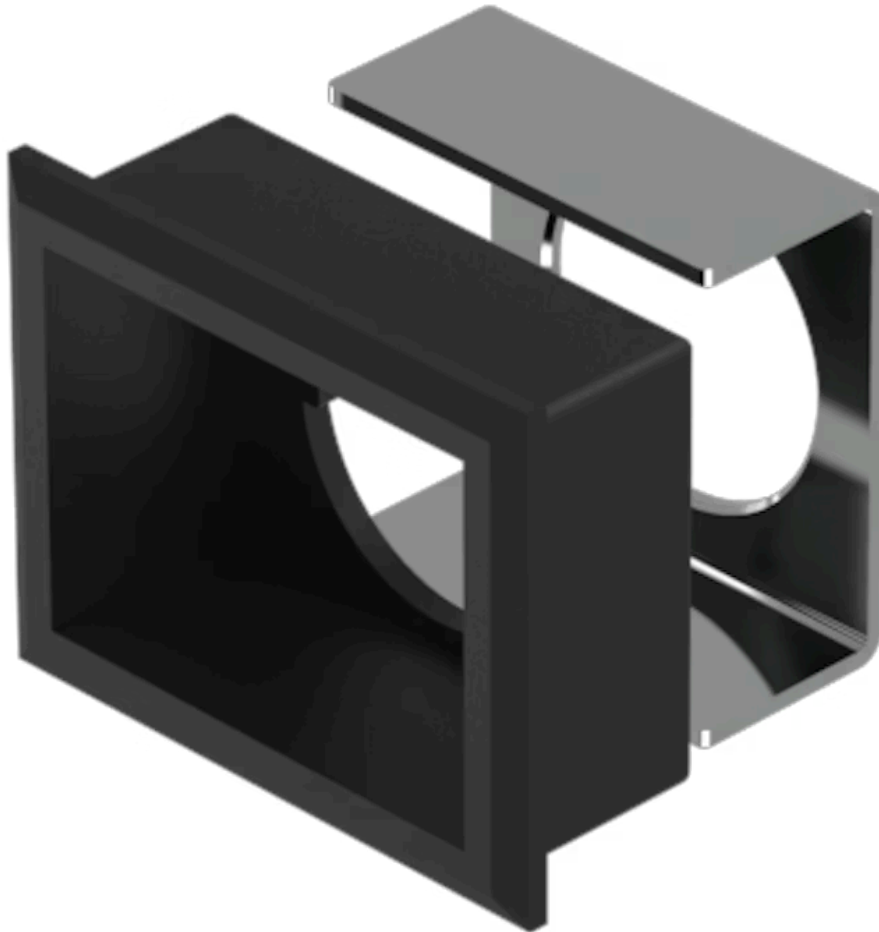


Front bezel set

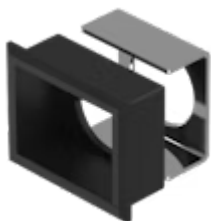
61-9931.0

Distribution by
Newark



<https://newark.eao.com/component/61-9931.0/en...>

Your product:



61-9931.0 Front bezel set

Loading . . .

FRONT

| | |
|------------------------------|--------------------------------|
| Front dimension: | 30 mm x 24 mm |
| Front form: | Rectangular |
| Front bezel colour: | Black |
| Front bezel material: | Plastic, according to UL 94 V0 |

MOUNTING

| | |
|--------------------------|----------------|
| Mounting cut-out: | 27 mm x 21 mm |
| Mounting type: | Panel mounting |

MECHANICAL CHARACTERISTICS

| | |
|----------------|----------|
| Weight: | 0.003 kg |
|----------------|----------|

CERTIFICATE

| | |
|---------------|-----------------|
| REACH: | REACH compliant |
| RoHS: | RoHS compliant |

OTHER

| | |
|----------------------------|--------------------------------------------------------------------------------------|
| Short Description: | Front bezel set, 30 mm x 24 mm, 24 mm x 18 mm, Black, Plastic, according to UL 94 V0 |
| Dimension: | 30 mm x 24 mm |
| Internal size: | 24 mm x 18 mm |
| Product attributes: | For indicator illuminated pushbutton and keylock switch |
| Mounting cut-outs: | |

