

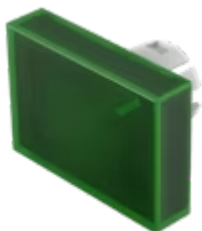
Lens

61-
9331.5

Distribution by
Newark



Your product:



61-9331.5 Lens

Loading ...

FRONT

Front form: Rectangular

OPERATING-/INDICATION PART

Lens colour: Green

Lens material: Plastic, according to UL 94 HB

Lens illumination: Illuminated

Lens shape: Flush

Lens optics: transparent

MECHANICAL CHARACTERISTICS

Weight: 0.002 kg

CERTIFICATE

REACH: REACH compliant

RoHS: RoHS compliant

OTHER

Short Description: Lens, 21.5 mm x 15.3 mm, Illuminated, Green, Flush, Plastic, according to UL 94 HB

Dimension: 21.5 mm x 15.3 mm