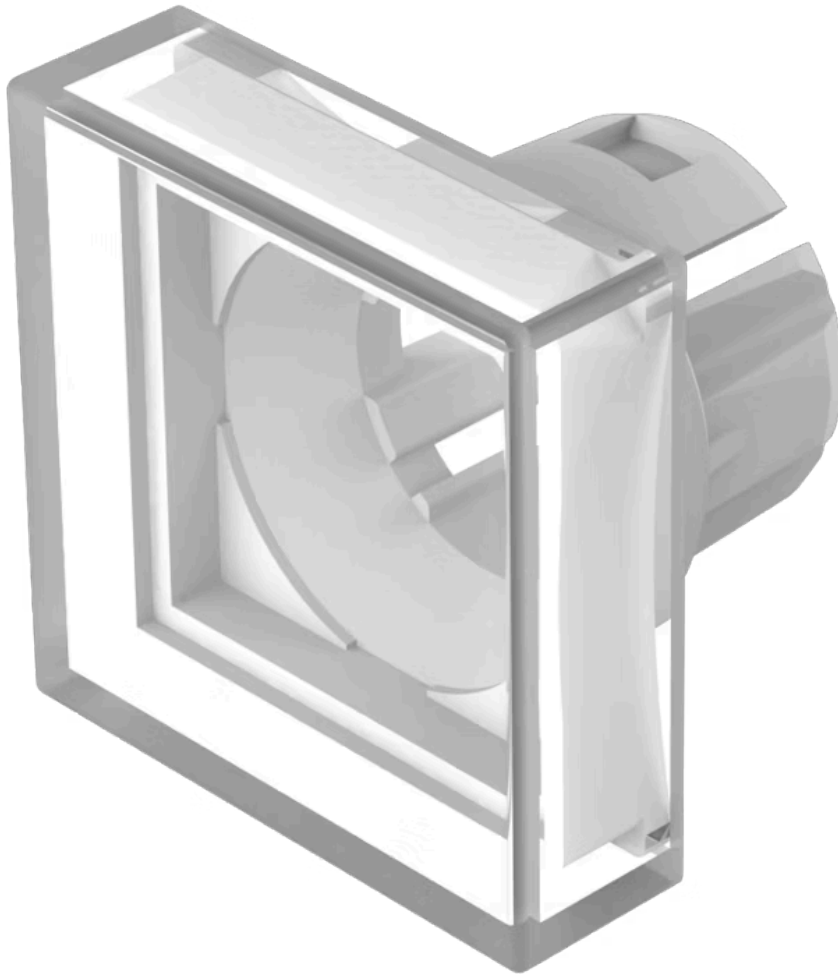


Lens

61-
9321.7

Distribution by
Newark



<https://newark.eao.com/component/61-9321.7/en...>

Your product:



61-9321.7 Lens

Loading ..

FRONT

Front form: Square

OPERATING-/INDICATION PART

Lens colour: Colourless

Lens material: Plastic, according to UL 94 HB

Lens illumination: Illuminated

Lens shape: Flush

Lens optics: transparent

MECHANICAL CHARACTERISTICS

Weight: 0.001 kg

CERTIFICATE

REACH: REACH compliant

RoHS: RoHS compliant

OTHER

Short Description: Lens, 15.3 mm x 15.3 mm, Illuminated, Colourless, Flush, Plastic, according to UL 94 HB

Dimension: 15.3 mm x 15.3 mm