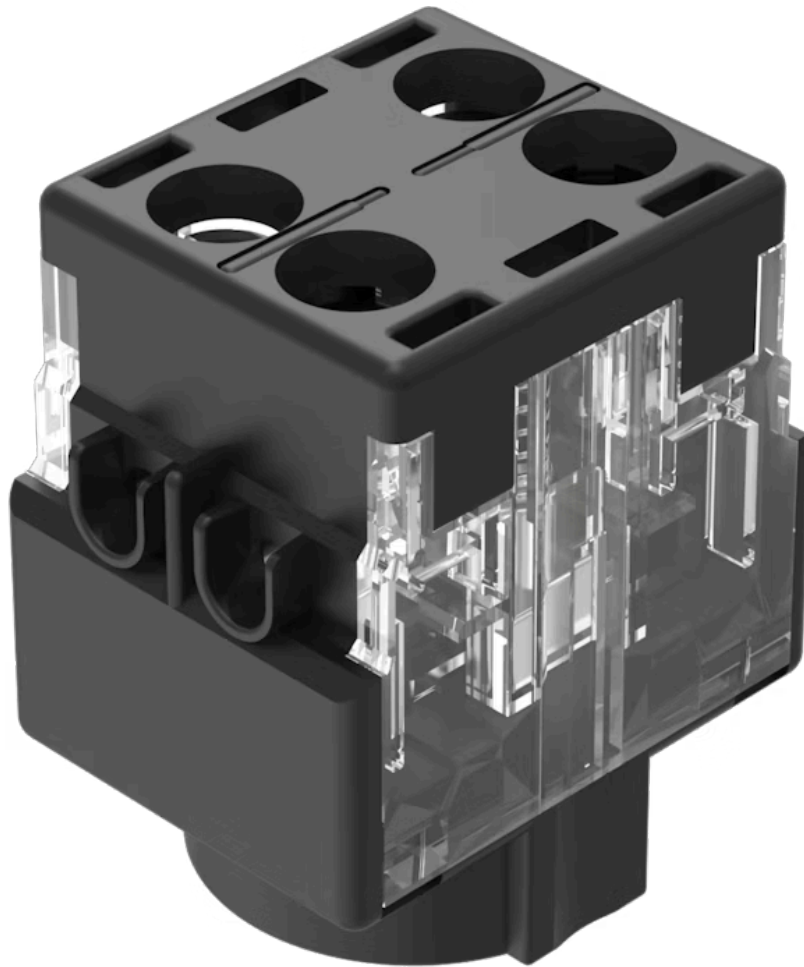


Switching element

61-8675.11

Distribution by
Newark



<https://newark.eao.com/component/61-8675.11/e...>

Your product:



61-8675.11 Switching element

Loading ...

ELECTRICAL CHARACTERISTICS

Switching voltage and switching current:

| | | |
|--------------------------------------|---------|---------|
| Switch rating AC with silver contact | | |
| Service category AC-15 | | |
| according to EN IEC 60947-5-1 | | |
| Voltage | 125 VAC | 250 VAC |
| Current | 3 A | 2 A |
| Switch rating DC with silver contact | | |
| Service category DC-13 | | |
| according to EN IEC 60947-5-1 | | |
| Voltage | 250 VDC | |
| Current | 0.2 A | |

Contacts:

1 NC / 1 NO

Contact resistance:

New state $\leq 50 \text{ m}\Omega$, as per DIN/IEC 60512-2-4, measured at 100 mA, 10 V

Rated Operational Voltage U_e :

250 VAC/DC according to EN IEC 60947-1

Rated impulse withstand voltage U_{imp} :

4 kV, according to EN/IEC 60947-5-1

Rated insulation voltage U_i :

320 VAC, according to EN / IEC 60947-5-1

Recommended minimum operational data:

| | |
|---------|-----------|
| Voltage | 20 VAC/DC |
| Current | 100 mA |

Switching rating:

250 V AC/DC @ 5 A

Electrical lifetime:

$\geq 50\,000$ cycles of operation at 250VAC, 2A, $\cos\phi 0.95$,

Electric strength:

4000 VAC, 50 Hz, 1 minute, as per DIN / IEC 60512-2 between all terminals and earth

Overvoltage category:

III, according to EN / IEC 60947-5-1

Pollution degree:

2, according to EN IEC 60947-1

Protection class:

II, according to EN / IEC 61058-1

Standards:

The switches comply with the "Standards for low-voltage switching devices" EN IEC 61058-1, EN IEC 60947-5-1

Thermal current I_{th} :

5 A, according to EN / IEC 60947-5-1

MECHANICAL CHARACTERISTICS

| | |
|-----------------------------|---|
| Terminal: | Screw terminal |
| Contact material: | Silver |
| Switching system: | Slow-make switching element |
| Switching system: | Double-break slow-make system, contact opening width 2 x 1.5 mm, with 2 x 2 contact points per switching element. NC-contact elements in the slow-make elements fulfill requirements of switches with forced opening as per EN / IEC 60947-5-12.17. |
| Switching positions: | 2 positions |
| Wire cross section: | 1 wire flexible: 0.5 ... 0.75 mm ² 1 wire super flexible: 0.5 mm ² 1 wire rigid: 0.5 ... 1.5 mm ² 2 wires super flexible: 0.5 mm ² 2 wires flexible: 0.5 mm ² 2 wires rigid: 0.75 mm ² |
| Weight: | 0.016 kg |

AMBIENT CONDITION

| | |
|-------------------------------|---|
| IP Protection: | IP40 |
| Operating temperature: | - 25 °C ... + 55 °C |
| Storage temperature: | - 40 °C ... + 85 °C |
| Shock resistance: | Max. 100 m / s ² , pulse width, 3-axis (sinusoidal EN IEC 60068-2-27) |
| Vibration resistance: | Max. 100 m / s ² from 10 Hz ... 500 Hz, (sinusoidal EN IEC 60068-2-6) |
| Climate resistance: | Damp heat, cyclic: 96 hours, + 25 °C/97 %, + 55 °C/93 % relative humidity, as per EN IEC 60068-2-30 Damp heat, steady: 56 days, + 40 °C/93 % relative humidity, according to EN IEC 60068-2-78 Rapid change of temperature: 100 cycles, - 40 °C ... + 80 °C, as per EN / IEC 60068-2-14 |

CERTIFICATE

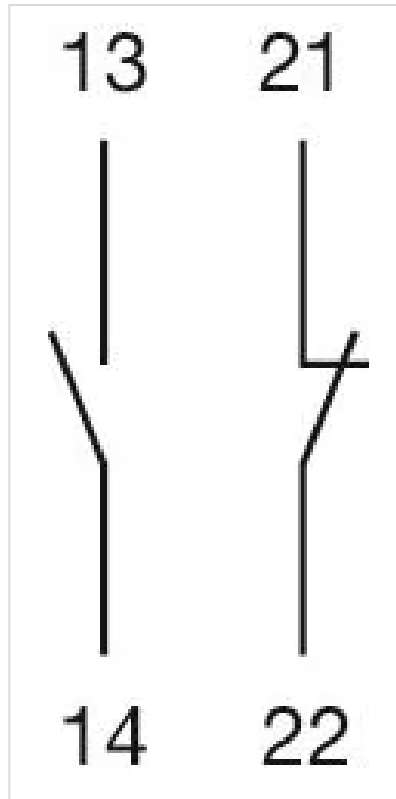
| | |
|----------------------|---|
| Approbations: | CB (IEC 61058-1), CQC, CSA, DNV, ENEC (EN 61058-1), UL, VDE |
| Conformities: | CE, UKCA, 2011 / 65 / EC (RoHS), 2014 / 35 / EU (LVD) |
| REACH: | REACH compliant |
| RoHS: | RoHS compliant |

OTHER

| | |
|----------------------------|--|
| Short Description: | Switching element, Slow-make switching element, 250 V AC/DC @ 5 A, Silver, 1 NC / 1 NO, Screw terminal |
| Material: | Plastic, according to UL 94 V0 |
| Product attributes: | |

Without lamp terminal

Wiring diagrams:



Component layouts:

