

Actuator

61-1310.0

Distribution by
Newark



<https://newark.eao.com/component/61-1310.0/en...>

Your product:



61-1310.0 Actuator

Loading ...

FRONT

Front dimension:	Ø 18 mm
Front form:	Round
Front bezel colour:	Black
Front bezel material:	Plastic

MOUNTING

Mounting cut-out:	Ø 16 mm
Mounting type:	Panel mounting

OPERATING-/INDICATION PART

Lens illumination:	Illuminated
---------------------------	-------------

MECHANICAL CHARACTERISTICS

Switching action:	Maintained or momentary
Mechanical lifetime:	According to DIN/IEC 60512-5-6 and EN/IEC 60947-5-1, 1 Mil. cycles of operation (maintain), 2 Mil. cycles of operation (momentary)
Operating force:	3 N ... 5 N snap-action switching element, 3.5 ... 11 N slow-make switching element
Operating Travel:	3 mm
Tightening torque:	Max. 0.5 Nm
Weight:	0.004 kg

AMBIENT CONDITION

IP Protection: IP40 rear side, according to EN IEC 60529, IP67 front side, according to EN IEC 60529

Operating temperature: - 25 °C ... + 55 °C

Storage temperature: - 40 °C ... + 85 °C

CERTIFICATE

REACH: REACH compliant

RoHS: RoHS compliant

OTHER

Short Description: Actuator, Ø 16 mm, Ø 18 mm, Illuminated, Round, Black, Plastic, Maintained or momentary

Internal size: Ø 15,8 mm

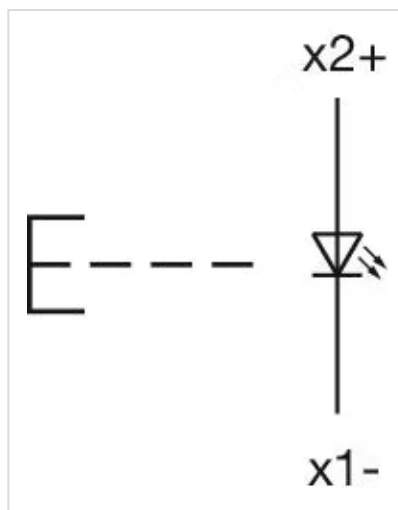
Housing colour: Black

Housing material: Plastic, according to UL 94 V0, self-extinguishing

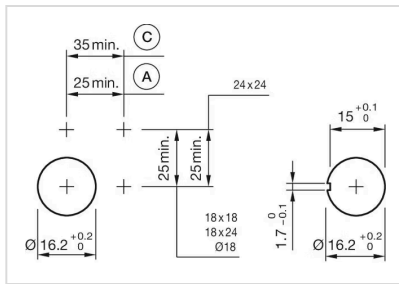
Product attributes: Convertible from momentary to maintained action

Hints: Convertible from momentary to maintained action

Wiring diagrams:

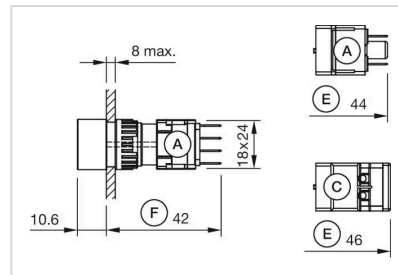


Mounting cut-outs:



A = Solder/Plug-in terminal 2.8 mm x 0.5 mm
 C = Screw terminal

Dimension drawings:



A = Plug-in terminal 2.8 mm x 0.5 mm
 C = Screw terminal
 E = Slow-make switching element
 F = Snap-action switching element