

# Actuator

61-1300.0

Distribution by  
Newark



<https://newark.eao.com/component/61-1300.0/en...>

Your product:

---



## 61-1300.0 Actuator

*Loading ...*

### **MOUNTING**

**Mounting type:** Panel mounting

### **OPERATING-/INDICATION PART**

**Lens illumination:** Illuminated

### **MECHANICAL CHARACTERISTICS**

**Switching action:** Maintained or momentary

**Mechanical lifetime:** According to DIN/IEC 60512-5-6 and EN/IEC 60947-5-1, 1 Mil. cycles of operation (maintain), 2 Mil. cycles of operation (momentary)

**Operating force:** 3 N ... 5 N snap-action switching element, 3.5 ... 11 N slow-make switching element

**Operating Travel:** 3 mm

**Tightening torque:** Max. 0.5 Nm

**Weight:** 0.004 kg

### **AMBIENT CONDITION**

**IP Protection:** IP40 rear side, according to EN IEC 60529, IP67 front side, according to EN IEC 60529

**Operating temperature:** - 25 °C ... + 55 °C

**Storage temperature:** - 40 °C ... + 85 °C

### **CERTIFICATE**

**REACH:** REACH compliant

**RoHS:** RoHS compliant

**OTHER**

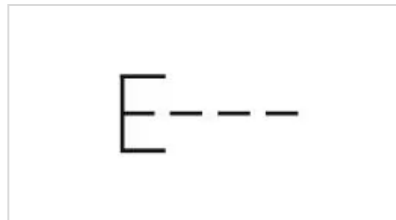
**Short Description:** Actuator, Illuminated, Maintained or momentary

**Housing colour:** Black

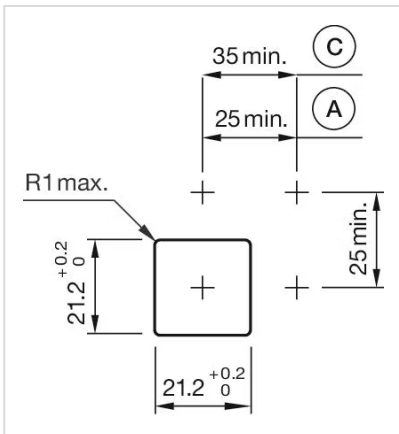
**Housing material:** Plastic, according to UL 94 V0, self-extinguishing

**Product attributes:** Convertible from momentary to maintained action

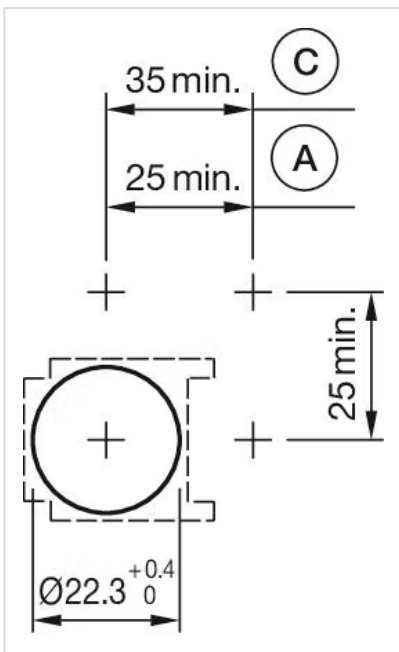
**Wiring diagrams:**



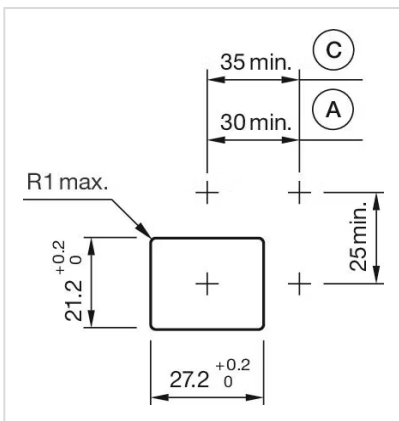
**Mounting cut-outs:**



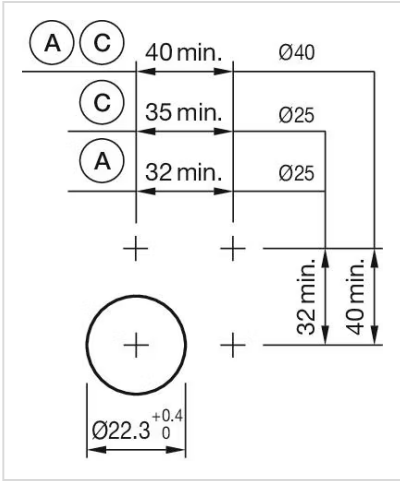
A = Solder/Plug-in terminal 2.8 mm x 0.5 mm  
 C = Screw terminal



A = Solder/Plug-in terminal 2.8 mm x 0.5 mm  
 C = Screw terminal

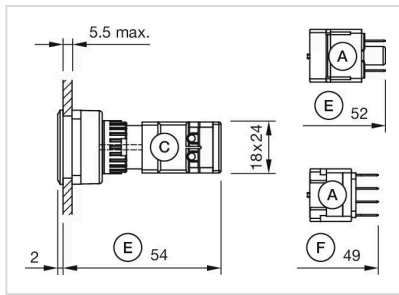


A = Solder/Plug-in terminal 2.8 mm x 0.5 mm  
 C = Screw terminal

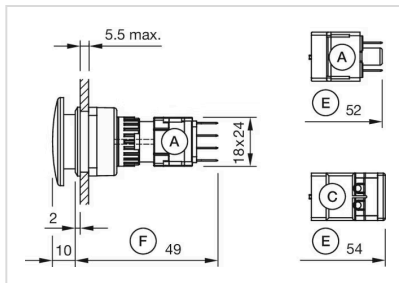


- A = Solder/Plug-in terminal 2.8 mm x 0.5 mm
- B = Solder terminal
- C = Screw terminal

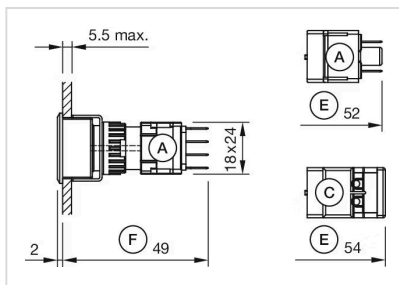
**Dimension drawings:**



A = Plug-in terminal 2.8 mm x 0.5 mm  
 C = Screw terminal  
 E = Slow-make switching element  
 F = Snap-action switching element



A = Plug-in terminal 2.8 mm x 0.5 mm  
 C = Screw terminal  
 E = Slow-make switching element  
 F = Snap-action switching element



A = Plug-in terminal 2.8 mm x 0.5 mm  
 C = Screw terminal  
 E = Slow-make switching element  
 F = Snap-action switching element