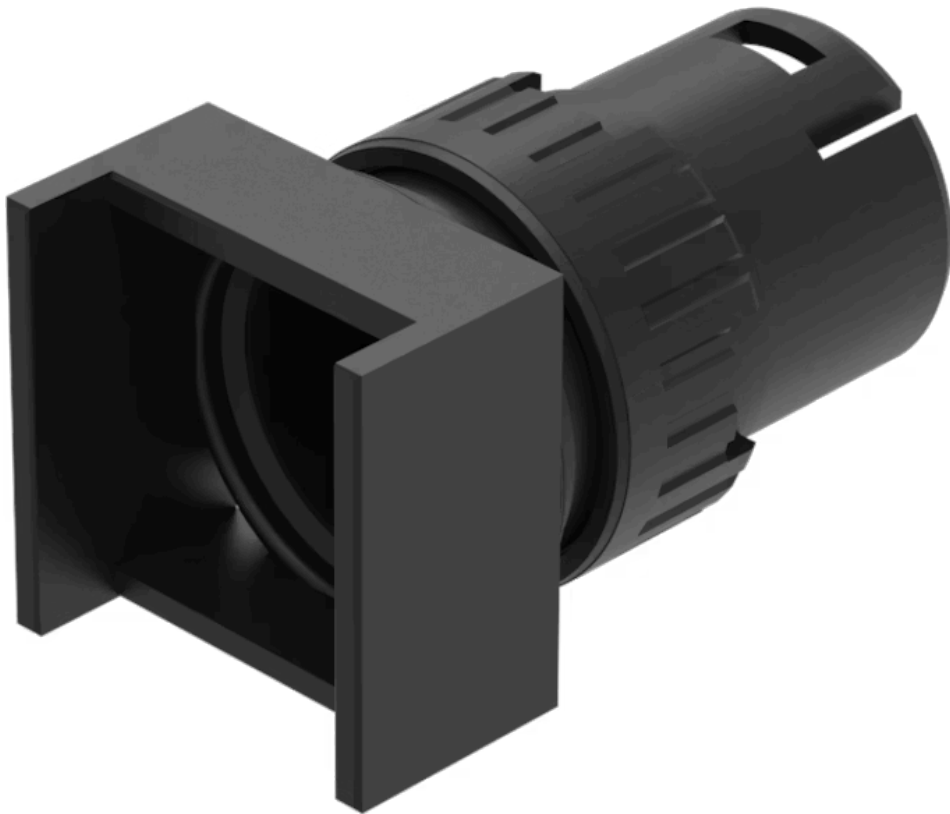


Actuator

61-1120.0

Distribution by
Newark



<https://newark.eao.com/component/61-1120.0/en...>

Your product:



61-1120.0 Actuator

Loading ...

FRONT

| | |
|------------------------------|---------------|
| Front dimension: | 18 mm x 18 mm |
| Front form: | Square |
| Front bezel colour: | Black |
| Front bezel material: | Plastic |

MOUNTING

| | |
|--------------------------|----------------|
| Mounting cut-out: | Ø 16 mm |
| Mounting type: | Panel mounting |

OPERATING-/INDICATION PART

| | |
|---------------------------|-------------|
| Lens illumination: | Illuminated |
|---------------------------|-------------|

MECHANICAL CHARACTERISTICS

| | |
|-----------------------------|---|
| Switching action: | Momentary |
| Mechanical lifetime: | According to DIN/IEC 60512-5-6 and EN/IEC 60947-5-1, 2 Mil. cycles of operation |
| Operating force: | 3 N ... 5 N snap-action switching element, 3.5 ... 11 N slow-make switching element |
| Operating Travel: | 3 mm |
| Tightening torque: | Max. 0.5 Nm |
| Weight: | 0.004 kg |

AMBIENT CONDITION

| | |
|-----------------------|--|
| IP Protection: | |
|-----------------------|--|

IP40 rear side, according to EN IEC 60529, IP67 front side, according to EN IEC 60529

Operating temperature: - 25 °C ... + 55 °C

Storage temperature: - 40 °C ... + 85 °C

CERTIFICATE

REACH: REACH compliant

RoHS: RoHS compliant

OTHER

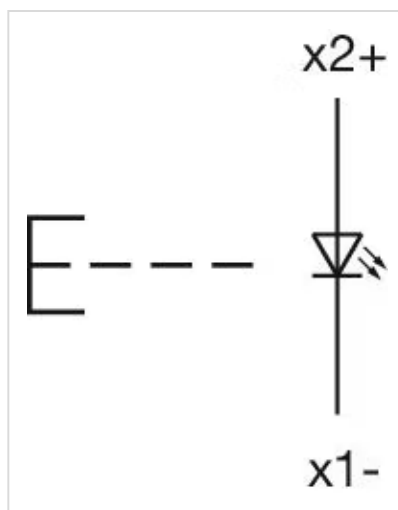
Short Description: Actuator, Ø 16 mm, 18 mm x 18 mm, Illuminated, Square, Black, Plastic, Momentary

Internal size: 15,3 mm x 15,3 mm

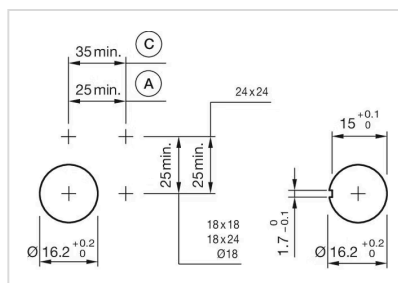
Housing colour: Black

Housing material: Plastic, according to UL 94 V0, self-extinguishing

Wiring diagrams:



Mounting cut-outs:



A = Solder/Plug-in terminal 2.8 mm x 0.5 mm
C = Screw terminal

Dimension drawings:



- A = Plug-in terminal 2.8 mm x 0.5 mm
- C = Screw terminal
- E = Slow-make switching element
- F = Snap-action switching element