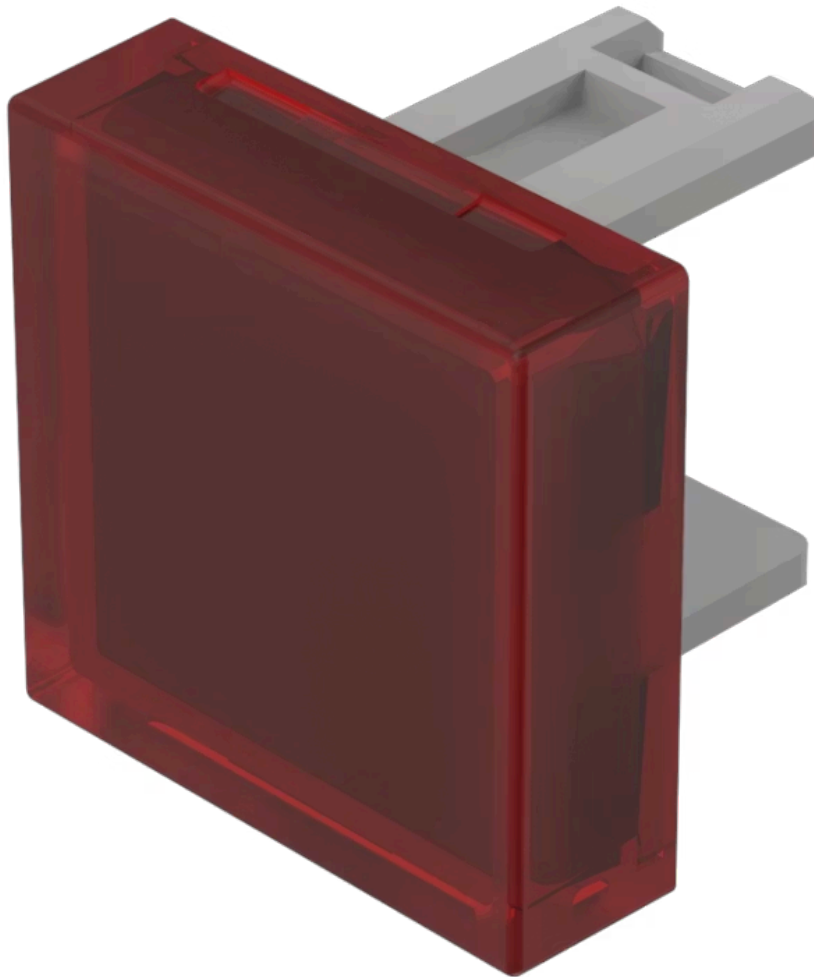


Lens

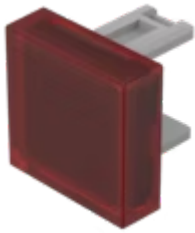
31-
951.2

Distribution by
Newark



<https://newark.eao.com/component/31-951.2/en/...>

Your product:



31-951.2 Lens

PRODUCT RANGE

Product Status: Not Recommended for new design

FRONT

Front form: Square

OPERATING-/INDICATION PART

Lens colour: Red

Lens material: Plastic

Lens illumination: Illuminated

Lens shape: Flush

Lens optics: translucent

MECHANICAL CHARACTERISTICS

Weight: 0.001 kg

CERTIFICATE

REACH: REACH compliant

RoHS: RoHS compliant

OTHER

Short Description: Lens, 15.3 mm x 15.3 mm, Illuminated, Red, Flush, Plastic

Dimension: 15.3 mm x 15.3 mm

Product attributes:

Not recommended for film insert