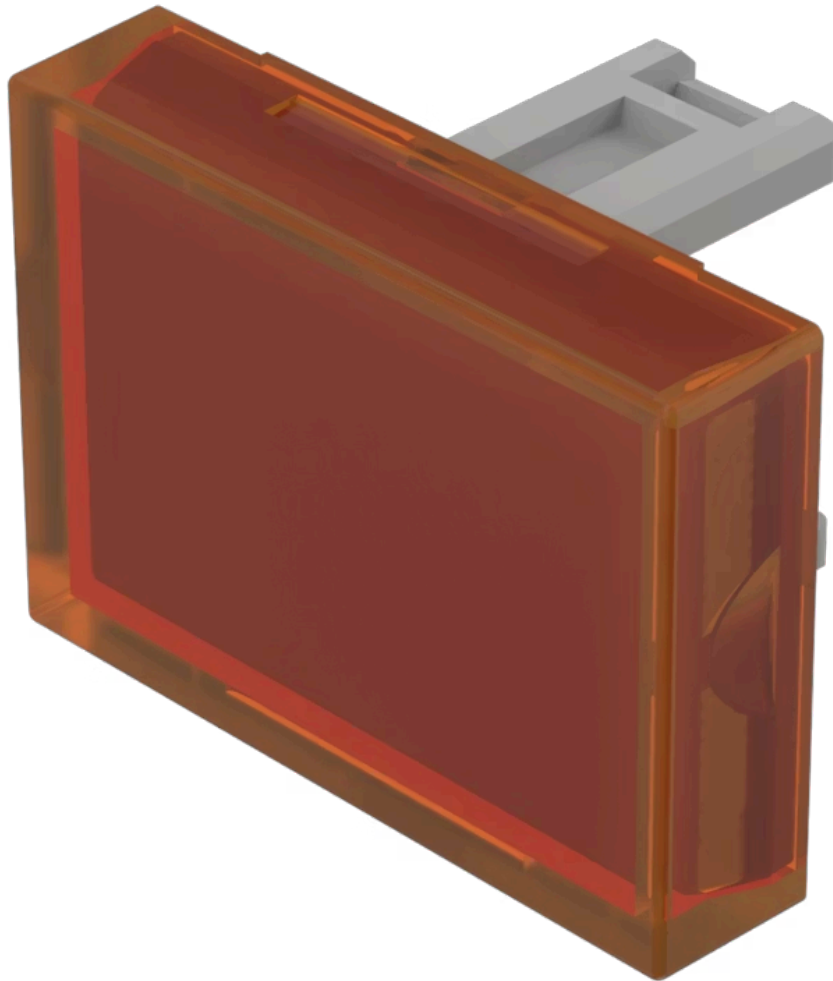


Lens

31-
903.3

Distribution by
Newark



<https://newark.eao.com/component/31-903.3/en/...>

Your product:



31-903.3 Lens

Loading ...

PRODUCT RANGE

Product Status: Not Recommended for new design

FRONT

Front form: Rectangular

OPERATING-/INDICATION PART

Lens colour: Orange

Lens material: Plastic

Lens illumination: Illuminated

Lens shape: Flush

Lens optics: transparent

MECHANICAL CHARACTERISTICS

Weight: 0.001 kg

CERTIFICATE

REACH: REACH compliant

RoHS: RoHS compliant

OTHER

Short Description:

Lens, 21.5 mm x 15.3 mm, Illuminated, Orange, Flush, Plastic

Dimension:

21.5 mm x 15.3 mm