

Lens

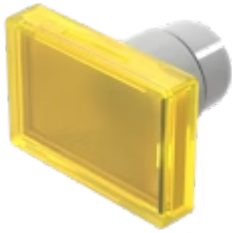
22-
903.4

Distribution by
Newark



<https://newark.eao.com/component/22-903.4/en/...>

Your product:



22-903.4 Lens

Loading ...

FRONT

Front form: Rectangular

OPERATING-/INDICATION PART

Lens colour: Yellow

Lens material: Plastic, according to UL 94 HB

Lens illumination: Illuminated

Lens shape: Flush

Lens optics: transparent

MECHANICAL CHARACTERISTICS

Weight: 0.002 kg

CERTIFICATE

REACH: REACH compliant

RoHS: RoHS compliant

OTHER

Short Description: Lens, 25.5 mm x 17 mm, Illuminated, Yellow, Flush, Plastic, according to UL 94 HB

Dimension: 25.5 mm x 17 mm