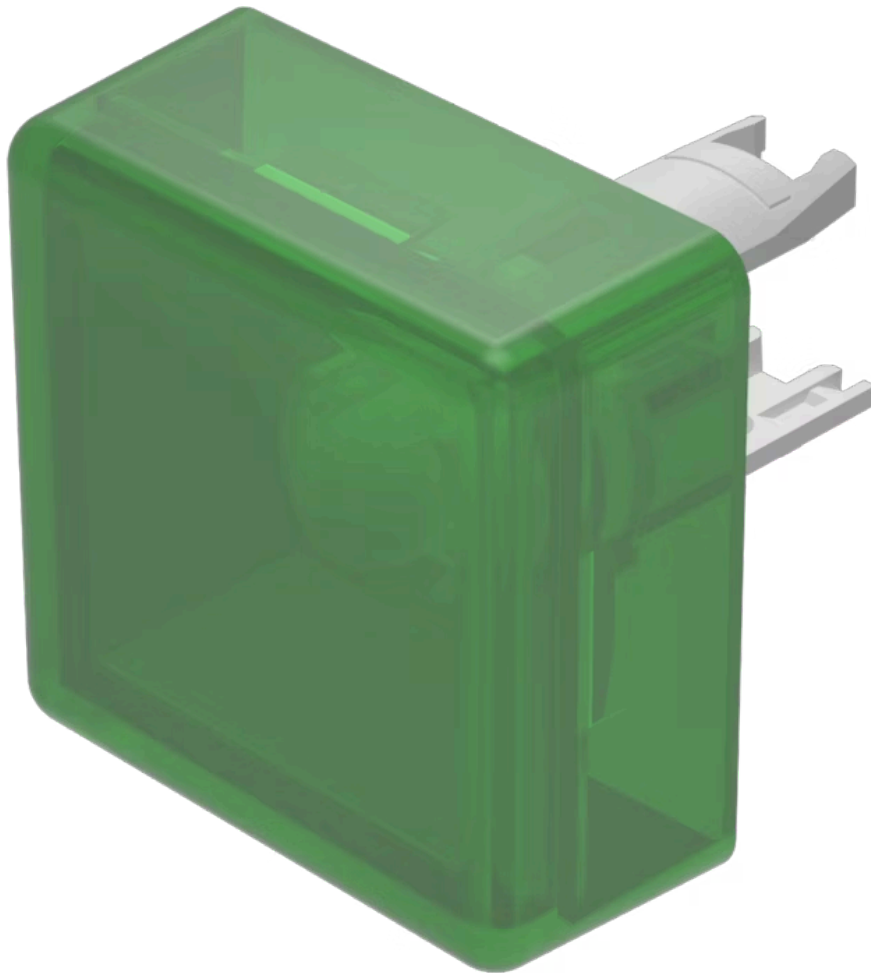


Lens

18-
981.5L

Distribution by
Newark



<https://newark.eao.com/p/18-981.5L>

Your product:



18-981.5L Lens

PRODUCT RANGE

Product Status: Phase-out

FRONT

Front form: Square

OPERATING-/INDICATION PART

Lens colour: Green

Lens material: Plastic

Lens illumination: Illuminated

Lens shape: Flush

Lens optics: translucent

MECHANICAL CHARACTERISTICS

Weight: 0.001 kg

CERTIFICATE

REACH: REACH compliant

RoHS: RoHS compliant

OTHER

Short Description: Lens, 13.8 mm x 13.8 mm, Illuminated, Green, Flush, Plastic

Dimension: 13.8 mm x 13.8 mm

Hints:

Luminosity and wave length variations caused by LED manufacturing processes may cause slight differences regarding the illumination. The customer has to decide what resistor shall be used to the LED, Red LED $V_f = 2.0$ VDC, yellow lens with white LED $V_f = 3.0$ V, green LED $V_f = 3.2$ V

Wiring diagrams: