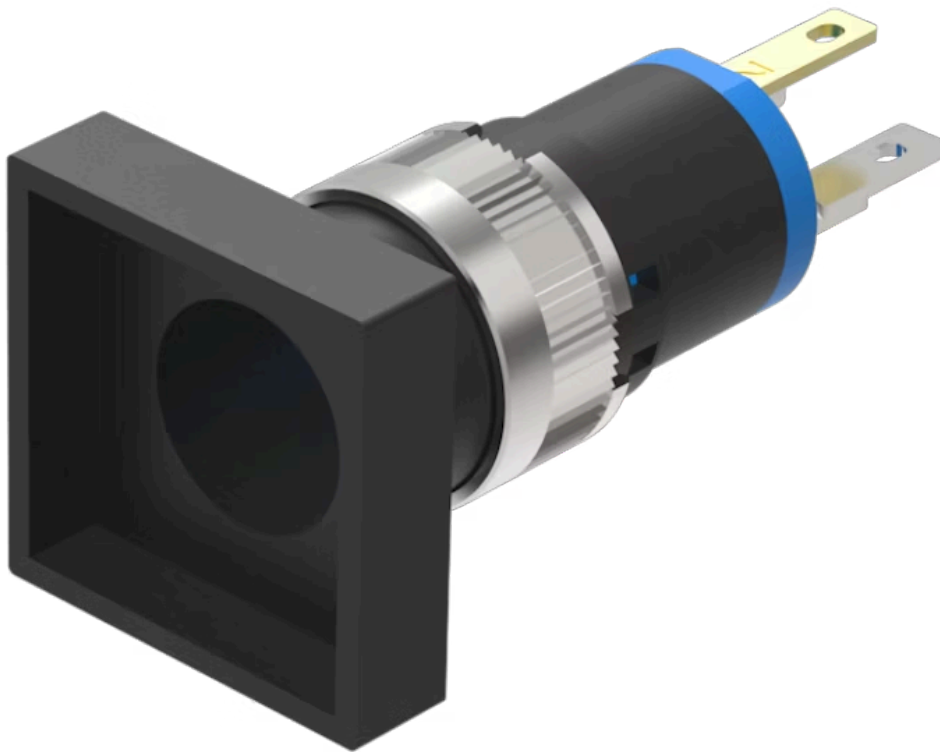


# Actuator

18-  
288.035

Distribution by  
Newark



<https://newark.eao.com/component/18-288.035/e...>

Your product:

---



## 18-288.035 Actuator

### PRODUCT RANGE

**Product Status:** Phase-out

### FRONT

**Front dimension:** 19 mm x 19 mm

**Front form:** Square

**Front bezel colour:** Black

**Front bezel material:** Plastic

### MOUNTING

**Design:** Flush

**Mounting type:** Panel mounting

### OPERATING-/INDICATION PART

**Lens illumination:** Illuminated

### ELECTRICAL CHARACTERISTICS

**Switching voltage and switching current:** 100 mA at 42 VAC/VDC

**Contacts:** 1 NC

**Switching rating:** 42 V @ 0,1 A

**Electrical lifetime:** ≥500 000 cycles of operation at 30 VDC, 100 mA, according to IEC 61058-1

**Electric strength:** 500 VAC, 50 Hz, 1 minute, as per IEC 60512-2-11 between all terminals and earth

## MECHANICAL CHARACTERISTICS

<b>Terminal:</b>	Soldering terminal
<b>Contact material:</b>	Gold
<b>Switching action:</b>	Maintained
<b>Switching system:</b>	Snap-action switching element
<b>Switching system:</b>	The snap-action switching system was designed for switching low powers in electronic circuits. Single-break snap-action contact.
<b>Mechanical lifetime:</b>	1 Mil. cycles of operation
<b>Operating force:</b>	1.4 N
<b>Operating Travel:</b>	ca. 2.2 mm ± 0.2 mm
<b>Tightening torque:</b>	Fixing nut max. 0.2 Nm
<b>Wire cross section:</b>	Max. wire cross-section 2 wires with 0.5 mm Max. wire cross-section of stranded cable 1 x 0.75 mm <sup>2</sup> Wire cross-section of terminal 1,6 x 0,4 mm <sup>2</sup>
<b>Weight:</b>	0.034 kg

## AMBIENT CONDITION

<b>IP front protection:</b>	IP40, according to IEC 60529
<b>Operating temperature:</b>	– 25 °C ... + 65 °C
<b>Storage temperature:</b>	– 40 °C ... + 80 °C
<b>Shock resistance:</b>	50 g for 11 ms, as per DIN / EN 60068-2-27 (Single impacts, semi-sinusoidal)
<b>Vibration resistance:</b>	10 g at 10 Hz...2000 Hz, amplitude 0.75 mm (Sinusoidal), according to DIN EN 60512-4-4

## CERTIFICATE

<b>Conformities:</b>	2011 / 65 / EC (RoHS), 2014 / 35 / EU (LVD) for version 230 VAC
<b>REACH:</b>	REACH compliant
<b>RoHS:</b>	RoHS compliant

## OTHER

<b>Short Description:</b>	Actuator, 19 mm x 19 mm, Illuminated, Square, Black, Plastic, 1 NC, Maintained, Soldering terminal, IP40, according to IEC 60529
<b>Internal size:</b>	13,8 mm x 13,8 mm
<b>Housing colour:</b>	Black

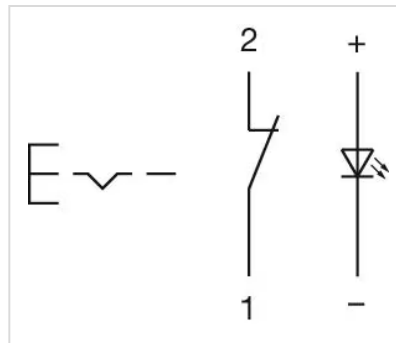
**Housing material:**

Plastic

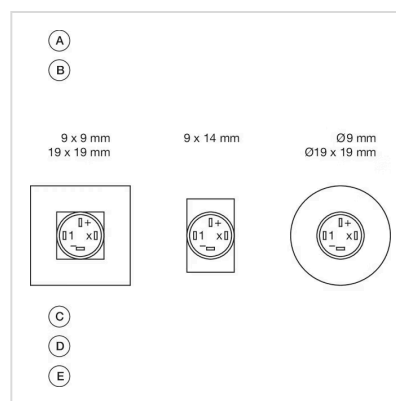
**Product attributes:**

+/- terminals are not connected

**Wiring diagrams:**

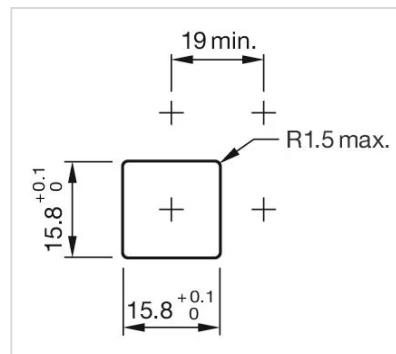


**Component layouts:**



A = Terminals (rear side)  
B = Illuminated pushbutton  
C = x = Contact No.  
D = 2 = Normally open  
E = 4 = Normally close

**Mounting cut-outs:**



**Dimension drawings:**

